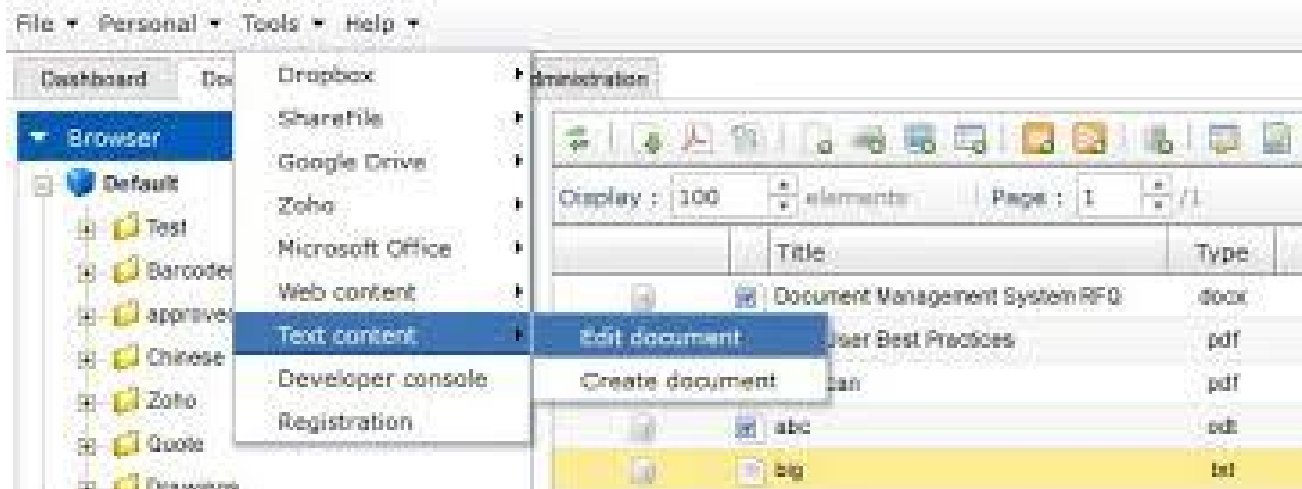


Mastering Collaboration: The Role of Text Editors in Google Drive

In the realm of electronic productivity, Google Drive has become a foundation system for collaboration and data administration. While its suite of applications encompasses numerous capabilities, message modifying attracts attention as a fundamental facet for numerous individuals. As people and teams increasingly rely on Google Drive for file development and sharing, the integration of specialized full-screen editor comes up with a brand-new dimension of efficiency and adaptability. In this post, we delve into the importance of full-screen editor customized for Google Drive, exploring their benefits, attributes, and prospective influence on operations optimization.

Smooth Combination: Connecting the Space In Between Performance and Ease of access

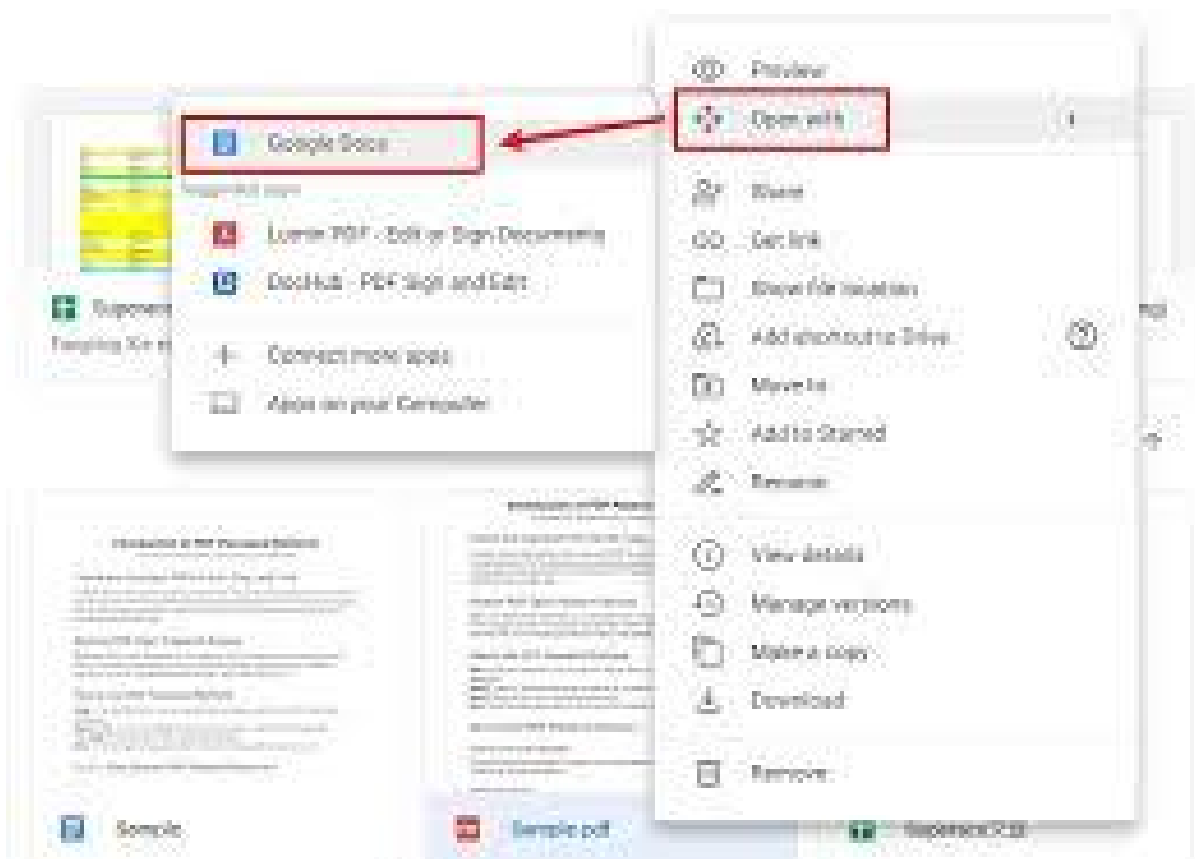


One of the key advantages of text editors designed for Google Drive is their seamless assimilation with the system. Unlike standalone applications, these editors operate within the acquainted atmosphere of Google Drive, removing the demand for consistent changing between different tools. Whether you're preparing a report, putting together conference minutes, or conceptualizing concepts, having a text editor straight within Google Drive improves the whole process. This combination not only enhances access however also promotes collaboration, as documents can be conveniently shared and edited within the same environment.

Boosted Collaboration: Assisting In Real-Time Modifying and Responses

Cooperation lies at the heart of Google Drive's ethos, and text editors tailored for this platform intensify its joint capabilities. With features such as real-time editing and commenting, numerous customers can work on a record at the same time, promoting harmony and efficiency. Whether it's a team refining a task proposal or teachers giving comments on student projects, the capability to team up effortlessly improves efficiency and accelerates the rate of work. In addition, version background tracking ensures openness and accountability, enabling customers to change to previous models if needed.

Modification and Extensibility: Tailoring Tools to Suit Person Requirements



While Google Docs offers robust message editing performances, specialized full-screen editor for Google Drive commonly supply additional modification choices and extensions. Users can personalize their editing and enhancing atmosphere, readjusting setups such as font choices, layout choices, and format designs to align with their operations. The combination of third-party extensions increases the abilities of these editors, permitting for jobs such as grammar

checking, citation administration, and progressed format. This versatility encourages individuals to tailor their message editing and enhancing experience according to their details requirements, improving both efficiency and contentment.

Offline Access: Making Sure Efficiency Beyond Connection Constraints



Regardless of the universality of net connectivity [Text editor for Google Drive](#), there are circumstances where access to the internet might be restricted or intermittent. Full-screen editor for Google Drive address this challenge by offering offline performance, enabling customers to continue dealing with their records without being connected to an internet connection. This feature is particularly helpful for people who regularly take a trip or locate themselves in locations with poor connection. By flawlessly syncing changes once connection is recovered, these editors make certain uninterrupted performance, regardless of external constraints.