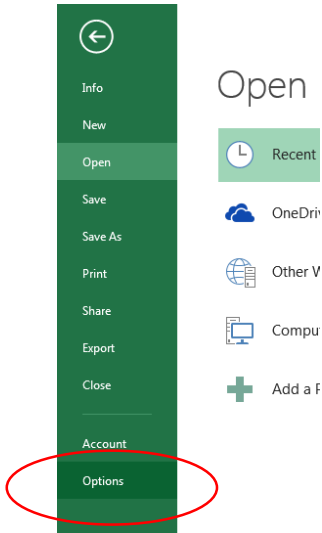
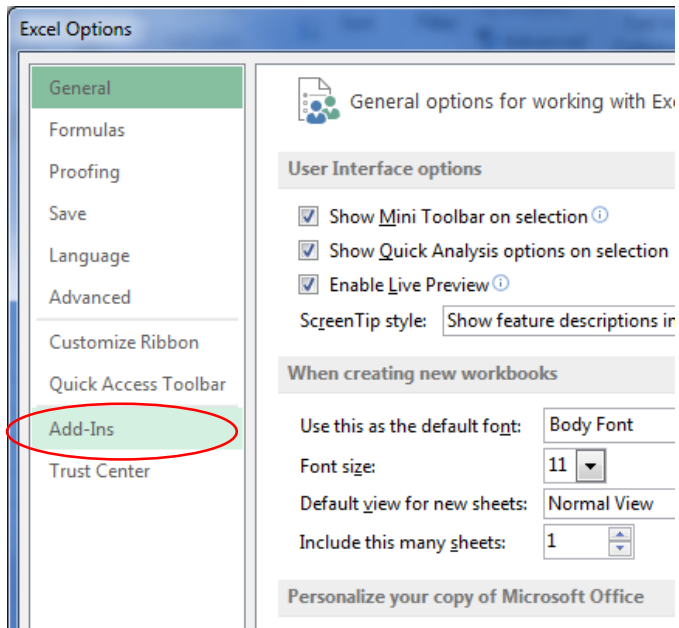


Instructions on Opening Excel's statistics package: Data Analysis ToolPak

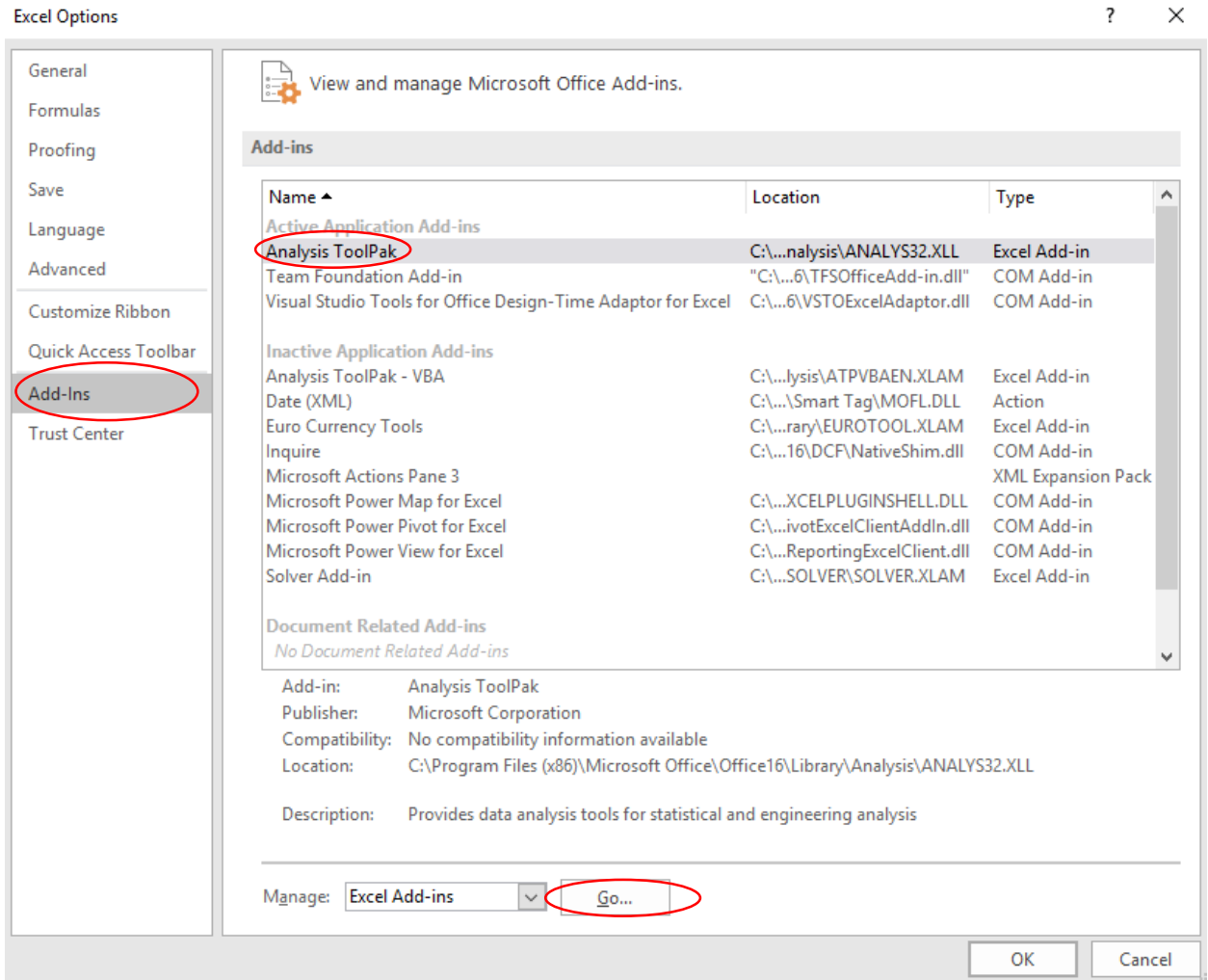
1. Open Excel, click on the file menu, and choose Options.

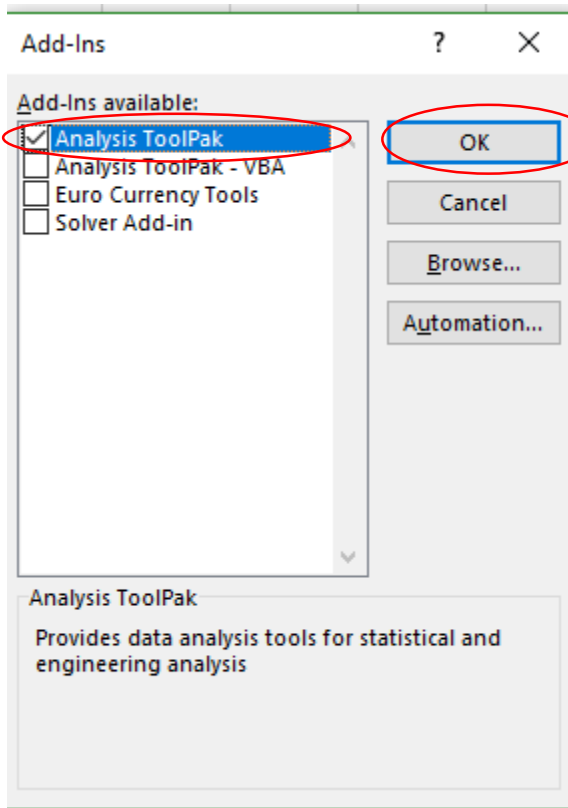


2. Choose the Add-Ins Option from the left pane.



3. In the Add-Ins window, click on Analysis ToolPak. Then, at the bottom of the window to the right of the Manage menu, click Go...





4. After you click OK, you should be taken back to spreadsheet view. To access the Data Analysis tools, click on the Data menu and you should see a Data Analysis button to the far right on the ribbon.

